

**3** If a plant has fibrous root, what type of venation are its leaves likely to have?

**Ans:** Parallel venation.

**4** If a plant has leaves with reticulate venation, what kind of roots will it have?

**Ans:** Tap root.

**5** Is it possible for you to recognise the leaves without seeing them? How?

**Ans:** We cannot exactly recognise the leaves without seeing them. We may be able to have some idea by touching and smelling them.

**6** Write the names of the parts of a flower in sequence, from outside to inside.

**Ans:** The names of various parts of a flower from outside to inside are:

(i) Sepals

(ii) Petals

(iii) Stamens

(iv) Pistil

**7 Name the part of the plant which produces its food. Name this process.**

**Ans:** Leaves produce food for the plant. This process is called photosynthesis.

**8 In which part of a flower you are likely to find the ovary?**

**Ans:** We find ovary in pistil. It is the lowermost part of the pistil.

**9 Name two flowers, each with joined and separates sepals.**

**Ans:**

**Flowers with joined sepals:**

(i) Datura

(ii) Loki

**Flowers with separate sepals:**

(i) Gurhal

(ii) Mustard

**What are the raw materials for photosynthesis?**

**Ans:**

- (i) Sunlight
- (ii) Water
- (iii) Carbon dioxide
- (iv) Chlorophyll

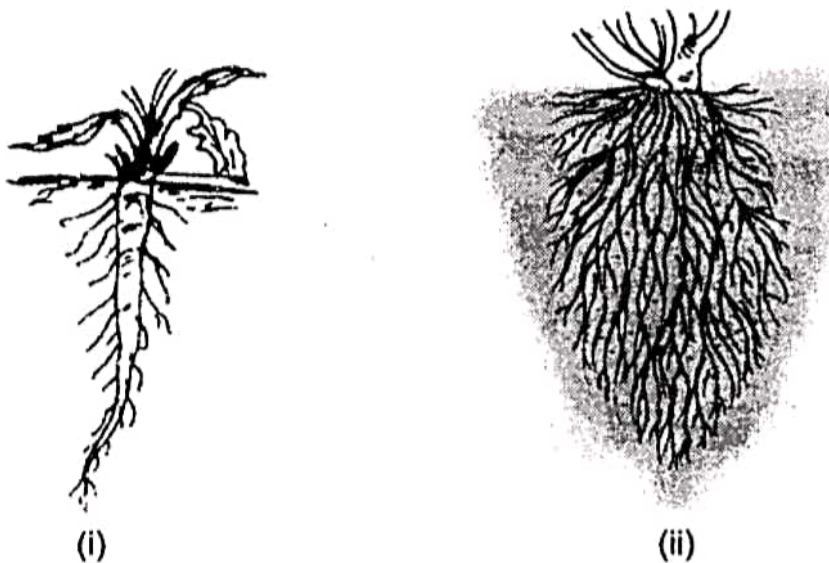
**Where does the photosynthesis take place in plants?**

**Ans:** It takes place in the leaves.

**Name the part of plant which helps in holding the plant in the soil.**

**Ans:** Roots.

**Name the types of roots shown in the Fig.**



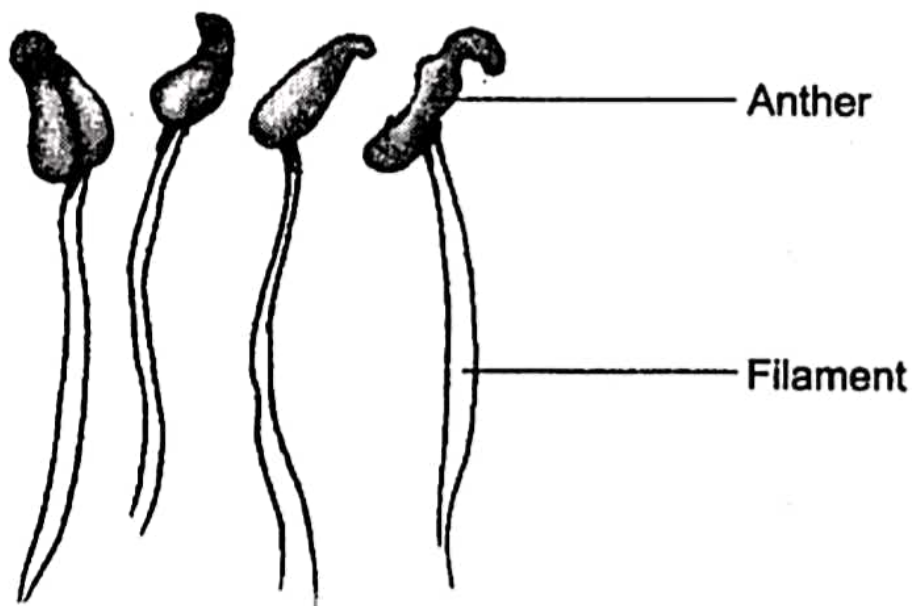
**Ans:** (i) Tap roots (ii) Fibrous roots

**What is the relation between leaf venation and the type of roots?**

**Ans:** The plants having tap root have reticulate venation. The plants having fibrous roots have parallel venation.

**Name the male part of a flower. Write names of its parts and draw a diagram.**

**Ans:** The male part of a flower is called stamen. It has two parts: (i) Filament and (ii) Anther.



**Fig.**            **Parts of a stamen**

**Name the female part of a flower. Write names of its parts and draw a diagram.**

**Ans:** The female part of a flower is called pistil. It has three parts: (i) Stigma, (ii) Style, and (iii) Ovary.

## Differentiate between tap root and fibrous root.

Ans:

<i>Tap root</i>	<i>Fibrous root</i>
<ol style="list-style-type: none"><li>1. Tap root has only one main and long root. The smaller roots that grow from the main root are called <i>lateral roots</i>.</li><li>2. Tap root goes deep into the soil.</li><li>3. Tap roots are found in plants which have <i>reticulate venation</i> in their leaves.</li></ol>	<p>Fibrous roots do not have a main root. All roots seem similar.</p> <p>They do not go deep into the soil. These are found in plants which have <i>parallel venation</i> in their leaves.</p>